

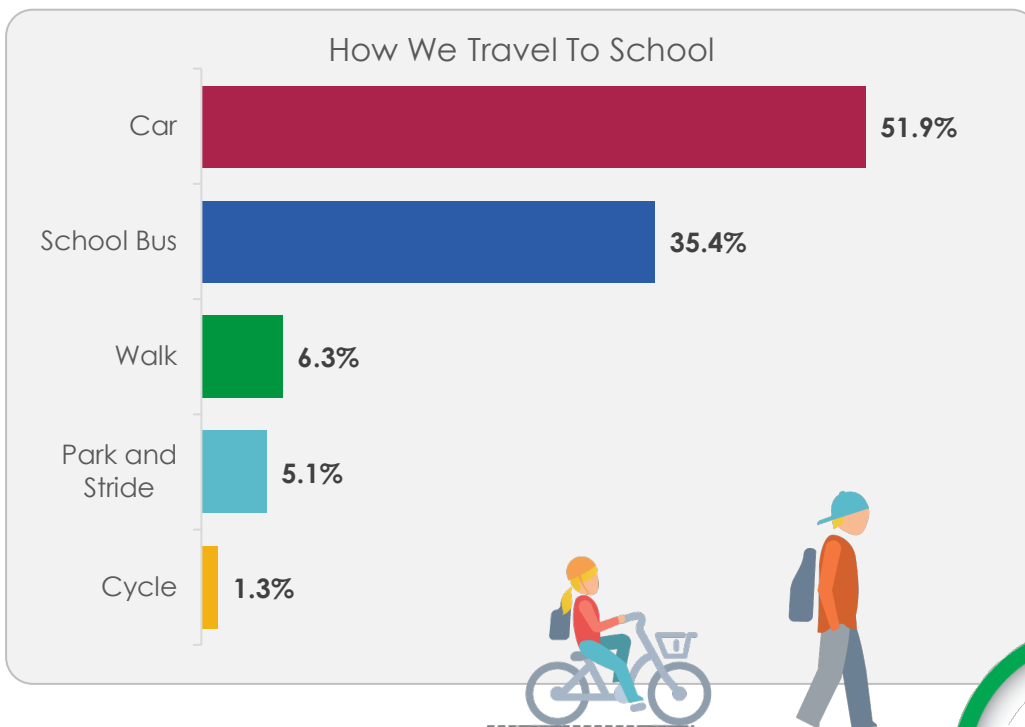
SAFE ROUTES TO SCHOOL

INTERMEDIATE SCHOOL KILLORGLIN PARENT SURVEY RESULTS

Results of Our Parent Survey

Responses received: 64 Students represented: 79

Our school has been selected to participate in the Safe Routes to School (SRTS) programme. The objective of the programme is to improve safety at the school gate and to support students to safely walk, cycle and scoot to school. Our Parent Survey results and support for the SRTS programme is showcased below.



59.4% of parents agreed that road safety is a problem around the school

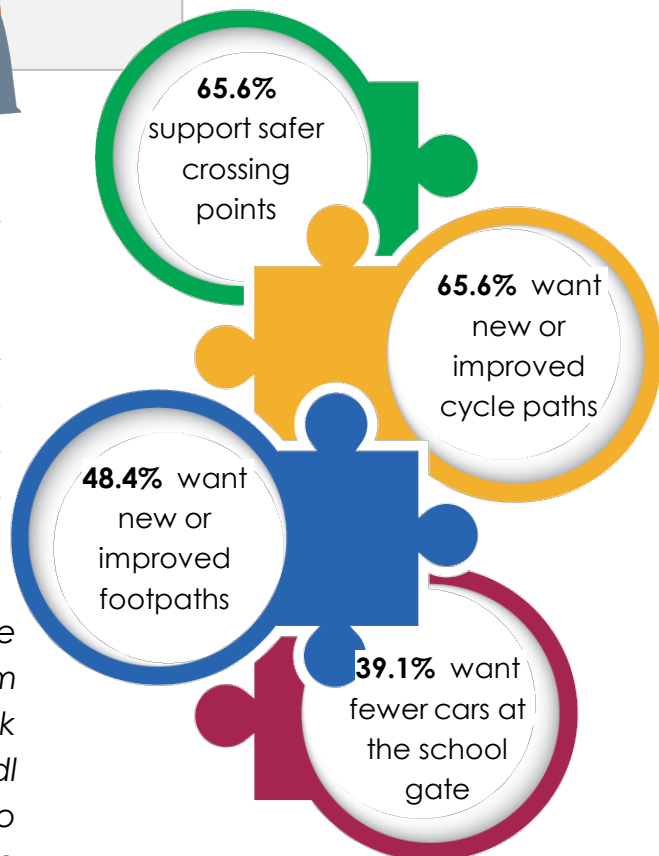
100.0% of parents would support works at the front of school that improve student safety, putting pedestrians and cyclists first

100.0% of parents would support works that improve the walking and cycling routes to our school

Some Key Comments Received from Parents

"The bottom of the school drive at the ISK is very dangerous. A crossing should be installed. Cycle routes would be good, although the ISK has many children travelling on buses from out of town so they can't arrive via bike routes. For local children it would be beneficial. Safer travel routes to get everyone out of cars and walking/cycling can only be a good thing."

"Should have a separate pedestrian and cycle gate so children and cars are not sharing same - no room for both safely. Another car school entrance at back of school - reduce traffic especially when new Lidl opens. A covered safe cycle parking area. Access to changing rooms so those who do cycle can change before school."

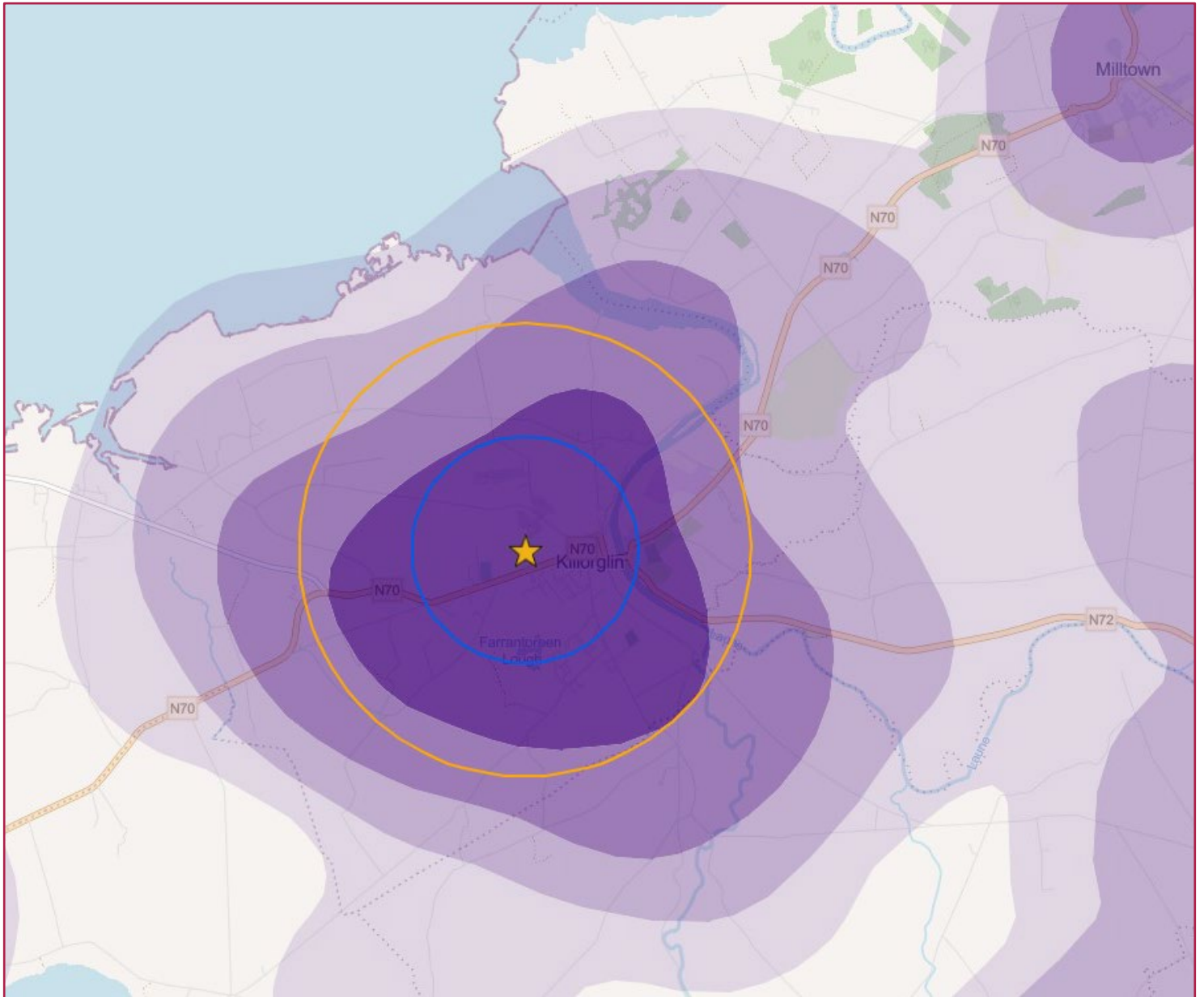


SAFE ROUTES TO SCHOOL

INTERMEDIATE SCHOOL KILLORGLIN - WHERE WE ARE TRAVELLING FROM

9% of students surveyed live within **1km** of the school

24% of students surveyed live within **2km** of the school



★ School location

○ 1km radius

○ 2km radius

Higher density of students travelling from this area



Lower density of students travelling from this area